

Extreme Reliability for Severe Applications

Minimal Maintenance

Decreased Downtime

Seamless Integration

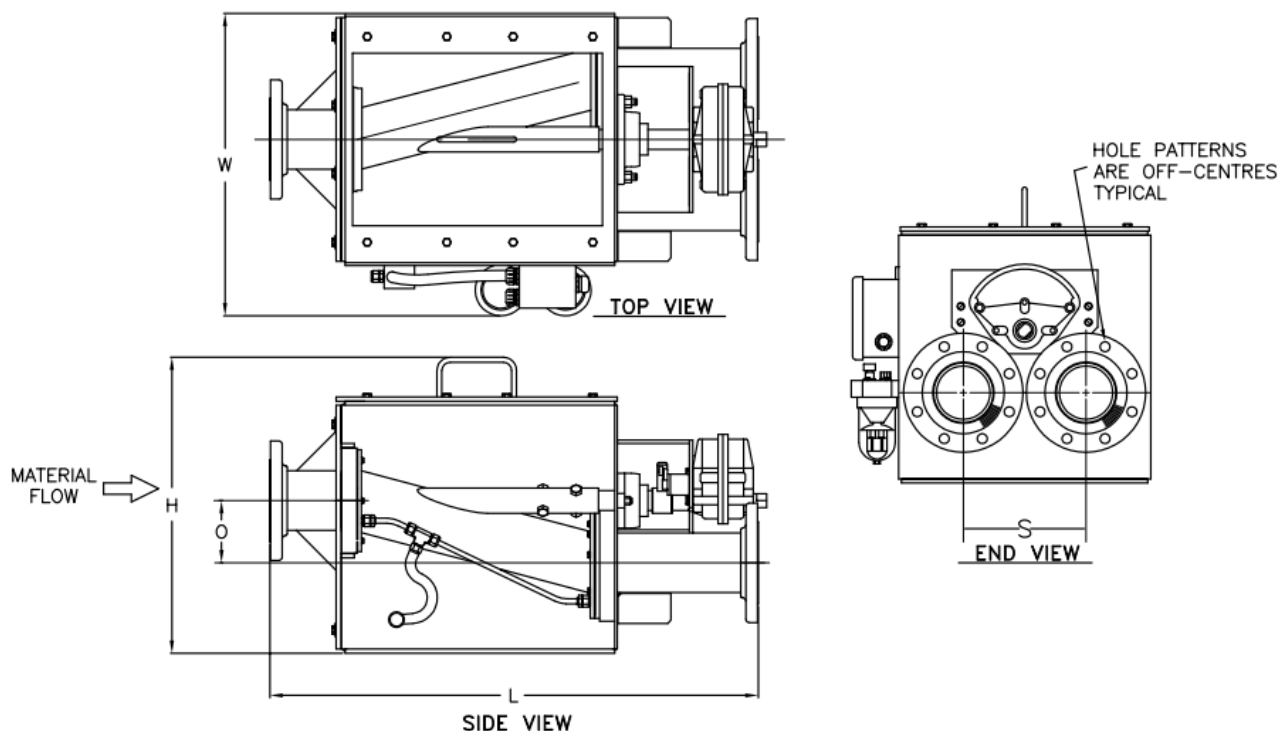
Fully Customisable

The Type T Switch Valve is used to form two branches in a conveying line, handling cohesive or moist materials. It is self-supporting in the conveying line and should be mounted vertically for best results. The valve action is self-cleaning and does not leave any residual material between position changes.

The changeover action operates with a novel parallel motion which requires only a small movement to realign inlet and outlet parts for the new direction.

A pneumatic seal is incorporated into the wall of the internal pipe section which is automatically inflated when accepting a delivery of materials; to prevent the material entering the housing and the shaft bearings.

- Designs available from DN50 inch to DN250
- Standard material carbon steel
- Available in 304/316 stainless steel and others
- Food grade, FDA, and pharmaceutical finishes
- Industrial coatings such as Teflon®, tungsten carbide and others where applicable
- Elastomer options neoprene, silicone, Viton, EPDM, FDA rubber
- Fully assembled and tested prior to shipment
- Manufactured in Suffolk, United Kingdom
- Global customer support for service and spare parts



MODEL (PIPE SIZE)	DIMENSIONS (mm)					NET WT (kg)
	W (WIDTH)	H (HEIGHT)	L (LENGTH)	S (PIPE SPACING)	O (OFFSET)	
DN50	386	378	624	157	79	95
DN80	482	473	781	197	702	141
DN100	581	568	937	232	121	189
DN125	645	632	1041	256	146	239
DN150	711	692	1143	289	146	290
DN200	870	851	1403	343	181	394
DN250	1032	1010	1664	419	213	501

INFORMATION NOT CERTIFIED FOR INSTALLATION PURPOSES