



Extreme Reliability for Severe  
Applications

Minimal Maintenance

Decreased Downtime

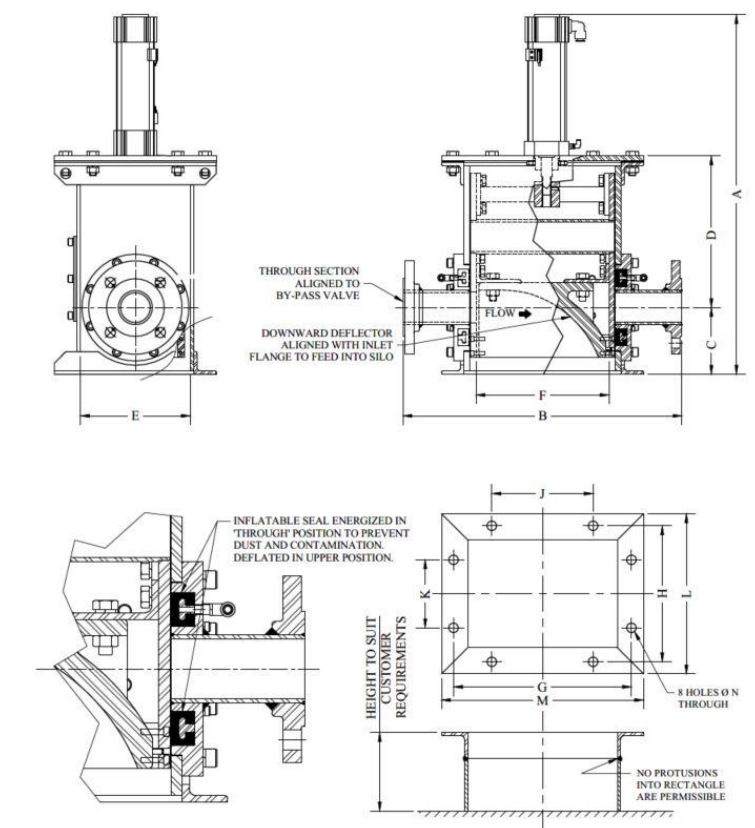
Seamless Integration

Fully Customisable

The Macawber UK Series Diverter is a specialty diverter valve to distribute material to multiple reception points. Unlike conventional diverter valves that use converging or diverging branch in the convey line, the Dump Valve® is affixed to the top structure of the storage bin to which material is being conveyed. The rectangular housing includes a through tube and ni-hard deflector plate, similar to what is utilised in Macawber UK End Diverter.

In the up position, the deflector plate directs material downward into the storage structure thus terminating the convey sequence. In the down position, the pipe section is aligned with both inlet and outlet ports to allow material to continue downstream to the next reception point. Inflatable seals are deployed in each end of the pipe section to prevent material leakage and pressure drop. Correct valve position is confirmed with proximity sensors. The inflatable seal is located externally reducing maintenance and down time. The operation of the Series Diverter is controlled by the system's primary PLC panel.

- Designs available from DN50 inch to DN300
- Standard material carbon steel with a ni-hard deflector
- Available in 304/316 stainless steel and others
- Food grade, FDA, and pharmaceutical finishes
- Industrial coatings such as Teflon®, tungsten carbide and others where applicable
- Elastomer options neoprene, silicone, Viton, EPDM, FDA rubber
- Fully assembled and tested prior to shipment
- Manufactured in Suffolk, United Kingdom
- Global customer support for service and spare parts



MODEL (PIPE SIZE)	DIMENSIONS (mm)													NET WT (kg)
	A	B	C	D	E	F	G	H	J	K	L	M	N (DIA)	
DN50	637	500	117	268	194	267	318	248	221	110	287	359	14	62
DN80	756	575	129	325	225	319	376	287	125	95	338	427	13	95
DN100	756	575	129	325	225	319	376	287	125	95	338	427	13	119
DN125	1027	675	152	447	291	414	483	360	125	233	402	525	17	139
DN150	1092	860	208	468	330	486	686	437	260	130	495	746	17	290
DN200	1287	957	230	572	356	645	749	495	149	156	521	810	17	395
DN250	1495	1008	235	694	449	656	770	570	154	191	630	830	17	612
DN300	1874	1300	344	873	530	948	1070	660	214	221	754	1164	22	665

**INFORMATION NOT CERTIFIED FOR INSTALLATION PURPOSES**

USA – Macawber Engineering, Inc  
India – Macawber Engineering Systems India, Ltd. Pvt.