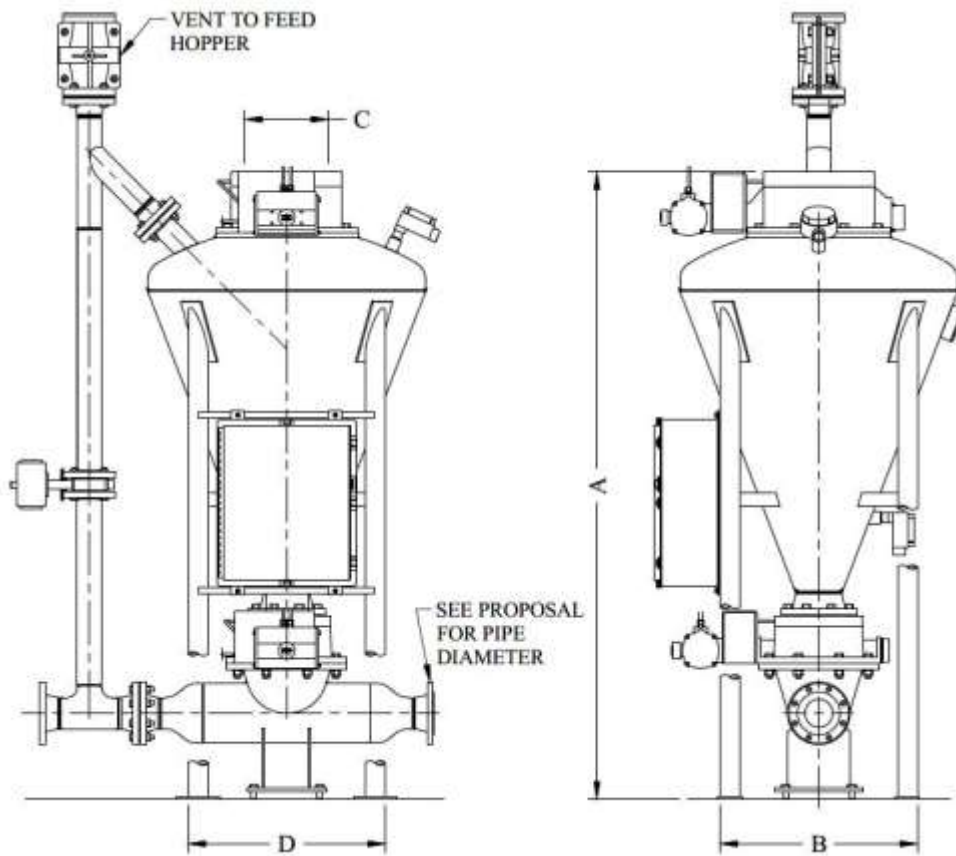




Long Distance Conveying
Reduced Wear
Energy Efficient
Minimised Maintenance
Decreased Downtime
Seamless Integration
Fully Customisable
Fully Enclosed Convey Process

The Variflo® is designed to operate over distances up to 1000m. It can convey most fluidisable powders and granular materials which are non-sensitive and generally non-abrasive. Variflo operates on the boundary of dilute and dense phase, a zone that can be unstable. As a result, to ensure stable conditions, material loading in the pipeline is closely controlled through our proprietary Dome Valve® fitted to the outlet of the vessel and acting as a modulating valve. This modulating valve opens and closes in response to pressure signals indicating the loading level in the pipeline. If the pressure is too high, the valve will close, reducing the loading and preventing pipe blockages. If the pressure is too low, the valve will open, increasing the loading. This optimises the velocity of the system, reducing pipe wear and maximising capacity. This method of line loading is essential for automatic self-regulating conveying efficiency when conveying distances are long. Due to the robust design of the Inflatek® valve, system life is also high and maintenance low.

- Temperature rating up to 400°C (752°F)
- Standard pressure rating up to 7barg (101psig). Higher pressure ratings available
- Standard material 516 Gd70 carbon steel
- Available in 304/316 stainless steel and others
- Food grade, FDA, and pharmaceutical finishes and coatings
- Industrial coatings such as Teflon®, tungsten carbide, nickel, and others
- Fully assembled and tested prior to shipment
- Manufactured in Suffolk, United Kingdom
- Global customer support for service and spare parts



MODEL	DIMENSIONS (mm)				NET WT (kg)
	A	B	C	D	
85/4	1168	762	102	762	304
200/8	1940	921	200	808	425
342/8	2291	721	200	721	650
510/12	1956	1067	305	1069	1075
737/12	2057	1143	305	1143	1471
1420/12	3773	1610	300	1610	2058
2800/12	3998	2073	300	2073	3384
4500/12	4597	2083	305	2083	3676
5664/16	5309	2286	406	2286	4268
8495/16	6248	2489	406	2489	1995

INFORMATION NOT CERTIFIED FOR INSTALLATION PURPOSES